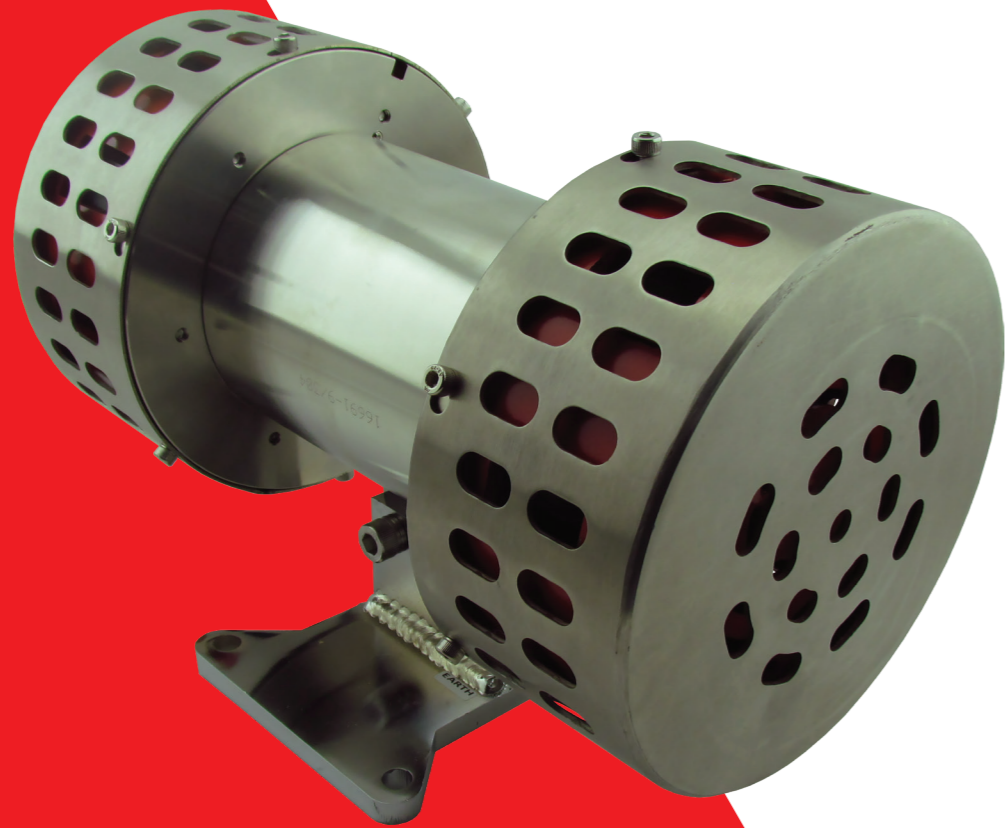


# BANSHEE

## Ex 26D Siren S1

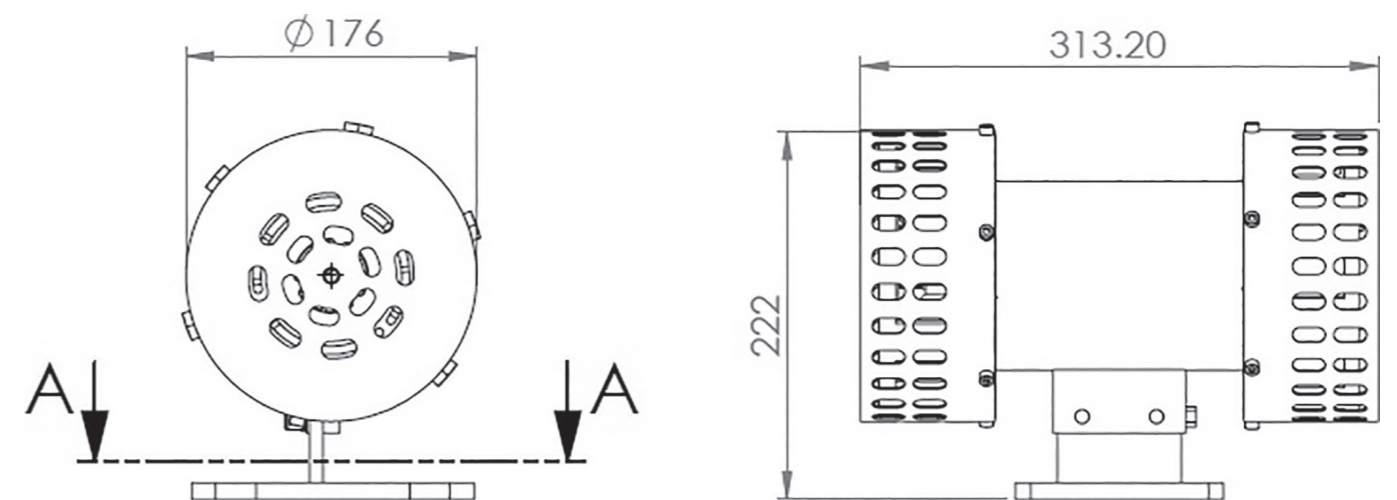


This Motorised siren is suitable for use in fiery mines as well as petrochemical plants and areas where an explosion-protected device is required. The unit consists of a 304 type stainless steel housing with a M20 cable entry, a stainless steel nose cone and a unique screw on lid for cable connection.

### BANSHEE EX 26D SIREN S1

SPECIFICATIONS	
VOLTAGE	110VAC   220VAC
DUTY CYCLE	Continuous (Thermal cut-out protected)
SOUND OUTPUT	121dB(A) at 1m
SOUND FREQUENCY	370Hz / 660Hz
APP. RANGE	2000m in still air on open field
CURRENT CONSUMPTION*	110VAC - 4A   220VAC - 3A
CLASSIFICATION	Ex db I Mb   Ex db IIC T6 Gb   Ex tb IIIC T85°C IP65 Db
CERTIFICATION	MASC MS/19-9003X
GAS GROUPS	I, IIA, IIB, IIC, IIIA, IIIB, IIIC
IGNITION GROUP	T6 - 85°C
IP RATING	IP65
WEIGHT	16kg
PACKING DIMENSIONS	200x250x200mm

\*Startup current x8 of nominal current



All dimensions are in mm