

BANSHEE

Ex Start Station S3

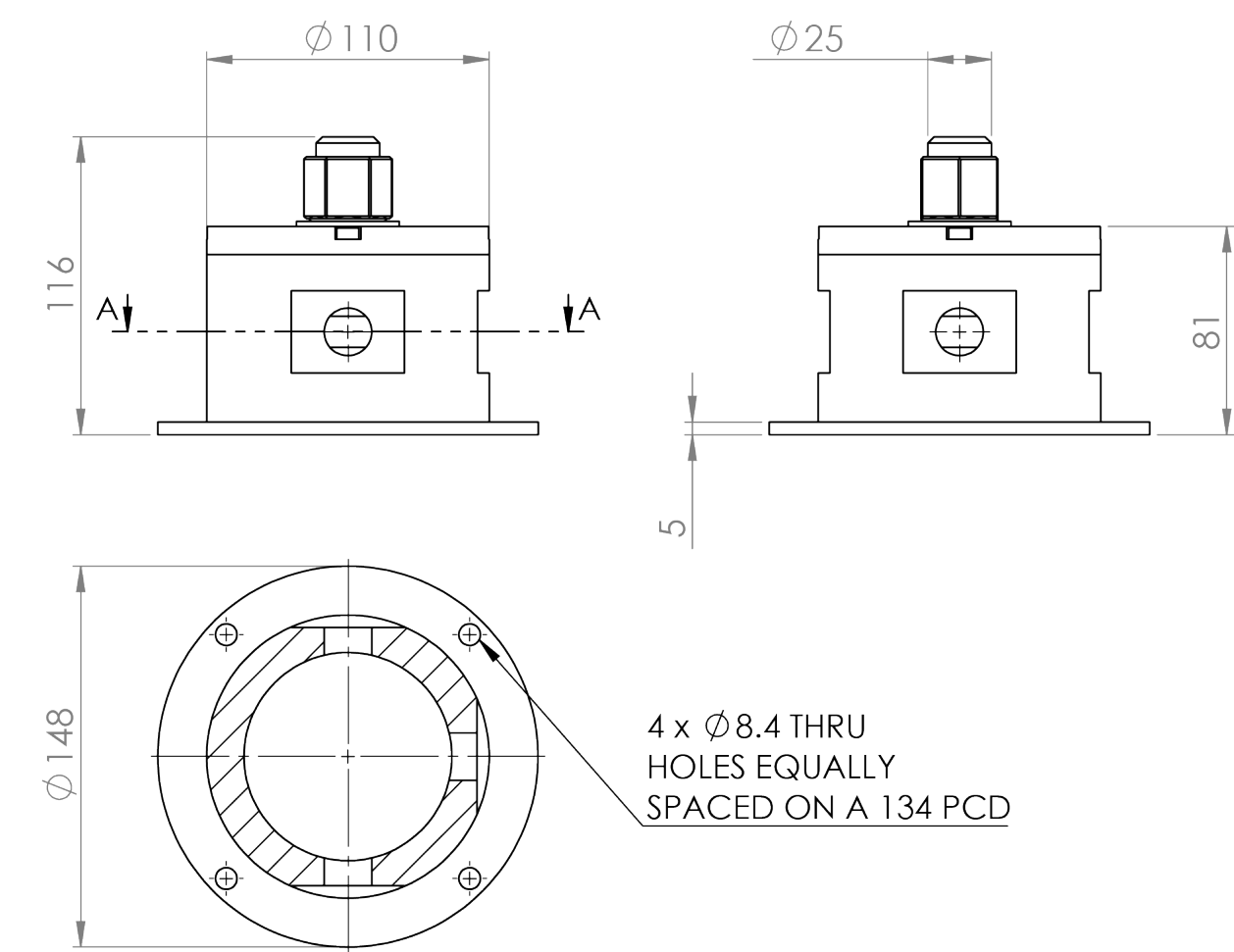


PRODUCT CODE
BXSA600

The Banshee Ex Start Station S3 enables operators to safely initiate the operation of machinery and equipment used in underground mining applications. The unit consists of a flameproof enclosure that houses a switch operator which supplies power to the equipment when the start button is pressed.

BANSHEE EX START STATION S3

SPECIFICATIONS	
RATED VOLTAGE	600V
DUTY CYCLE	Spring return
CURRENT CONSUMPTION*	10A
CLASSIFICATION	Ex db I Mb
CERTIFICATION	IECEX ICS 22.0021X IECEX ICS 22.0023U MASC M/23-9007X MASC M/23-9009U
GAS GROUPS	I
IGNITION GROUP	150°C
ZONE CLASS	Zone 1 & 2
IP RATING	IP54
WEIGHT	5kg
PACKING DIMENSIONS	210x150x150mm



All dimensions are in mm